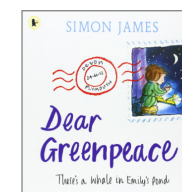


LKS2 – Cycle 2



	TIME DETECTIVES		MEET THE MAYANS		ENVIRONMENTAL ENGINEERING	
Subject	Autumn		Spring		Summer	
Hook	Local Area		Cadbury's World		Recycling Centre (Year 3) / The Deep (Year 4)	
<b>English</b>	Myth Raiders: Medusa's Curse Greeks - Non-fiction books		The Chocolate Tree: A Mayan Folktale		Dear Greenpeace Giant The Song of the Dolphin Boy	
<b>Maths</b>	<b>Year 3</b>	<b>Year 4</b>	<b>Year 3</b>	<b>Year 4</b>	<b>Year 3</b>	<b>Year 4</b>
	Number: Place Value Number: Addition and Subtraction – Mental and Written Number: Multiplication and Division – Mental and Written	Number: Place Value Number: Addition and Subtraction – Mental and Written Measurement: Length and perimeter Number: Multiplication and division	Number: Multiplication and Division Measurement: Money Statistics Measurement—length and perimeter Number: Fractions	Number: Multiplication and division Measurement: Area Number: Fractions Number: Decimals	Number: Fractions Measurement: Time Geometry: Properties of Shape Measurement: Mass and Capacity	Number: Decimals Measurement: Money Measurement: Time Statistics Geometry: Properties of Shape Geometry: Position and Directions
<b>Science</b>	<b>Year 3</b>	<b>Year 4</b>	<b>Year 3</b>	<b>Year 4</b>	<b>Year 3</b>	<b>Year 4</b>
	Sound Hypothesise, experiment, record, report, compare, interpret draw conclusions	Sound Hypothesise, experiment, record, report, compare, interpret draw conclusions	Light Plants Hypothesise, experiment, record, report, compare, interpret draw conclusions	Light Plants Hypothesise, experiment, record, report, compare, interpret draw conclusions	Electricity Hypothesise, experiment, record, report, compare, interpret draw conclusions	Electricity Hypothesise, experiment, record, report, compare, interpret draw conclusions
<b>RE</b>	<b>Year 3</b>	<b>Year 4</b>	<b>Year 3</b>	<b>Year 4</b>	<b>Year 3</b>	<b>Year 4</b>
	Understanding Life as a Hindu Harvest – What do Christians learn from the creation story? Festivals of Light – Diwali Christmas – Why does Christmas matter to Christians?	When Jesus left what was the impact of Pentecost? What kind of world did Jesus want? Christmas – What is the Trinity? Link to Christmas  (Remembrance)	What is it like to follow God? (UC People of God – Core) Easter – Why do Christians call the day Jesus died Good Friday? (UC Salvation – Core)	What is it like to follow? (UC People of God – Digging Deeper) Easter – Why do Christians call the day Jesus died Good Friday? (UC Salvation – Digging Deeper)	When Jesus left what was the impact of Pentecost? (UC Kingdom of God – Core) What kind of world did Jesus want? (UC Gospel – Core) What is the Trinity? (UC Incarnation/God – Core)	Religion family and community: worship, celebration, way of living - Life in a Sikh family - Worship and sacred places (Sikh and a Christian place of worship in Hucknall) What do Christians learn from the creation story? (UC Creation/fall – Digging Deeper)
<b>PE</b>	Athletics/Football, Swimming/Egyptian Dance(Y3) Athletics/Football, Basketball, Egyptian Dance (Y4)		Field Hockey, Tag Rugby, Swimming/Dance (Y3) Field Hockey, Tag Rugby, Cross country, Netball (Y4)		Tennis, Cricket, Rounders, Volleyball	
<b>Computing</b>	Online Safety, Coding, Spreadsheets		Online Safety Touch Typing, Email (Y3) Writing for different audiences, Logos (Y4)		Databases, Simulations, Graphing (Y3) Animation, Effective searching, Hardware investigation (Y4)	
<b>DT</b>	Greek Food Christmas Enterprise		Design and make a house – woodwork		Design and make a novelty litter bin with an electrical device	
<b>Art</b>	Drawing using different media (musical instruments) Greek Pottery		Perspective and Clay work		Observational drawing in pencil - electrical items Research Pop Art Creating own Pop Art Block printing designing and making	
<b>History</b>	Local area Ancient Greece		Mayans, Settlement		Famous Inventors	
<b>Geography</b>	Locating countries and cities in the UK Map work, Fieldwork, Grid references Map symbols and keys		Looking at impact of human use of natural resources and how it impacts earth Features of an environment – settlements, economy, trade, land use Features of an environment – settlements, economy, trade, land use		Map work Features of an environment – energy, natural resources	
<b>PSHE</b>	Anti-bullying (Y3) Settling in (Y3) Focus on feelings (Y3)	Anti-bullying (Y4) Feeling Good (Y4) Keeping healthy (Y4)	Making friends (Y3) Keeping in school (Y3)	Changes in families (Y4) Ups and Downs in Relationships (Y4)	In someone else's shoes (Y3) People and their work (Y3)	Keeping safe in and out of school (Y4) Looking ahead (Y4)
<b>Music</b>	Winter terminology within music Singing—Coffee and Carols		Our body - the instrument Music on computers		Recycled compositions - build your own instruments Instrument families	
<b>MFL (French)</b>	Meet and Greet (Y3) Counting and the weather (Y4)		Animals (Y3) Clothes and colours (Y4)		Family and friends (Y3) Parts of the body (Y4)	